

SPECIAL DISTRICT PUBLIC DISCLOSURE DOCUMENT
§ 32-1-104.8, C.R.S.

Name of District: Saddler Ridge Metropolitan District

The District has the following powers and is authorized to provide the following services: water, sanitary sewer, streets, parks and recreation, traffic and safety controls, transportation, telecommunication systems and services, mosquito and pest control, including all services, facilities, equipment and other improvements authorized under the Special District Act.

The District's Service Plan, which can be amended from time to time, includes a description of the District's powers and authority. A copy of the Service Plan is available from the Division of Local Government in the State Department of Local Affairs.

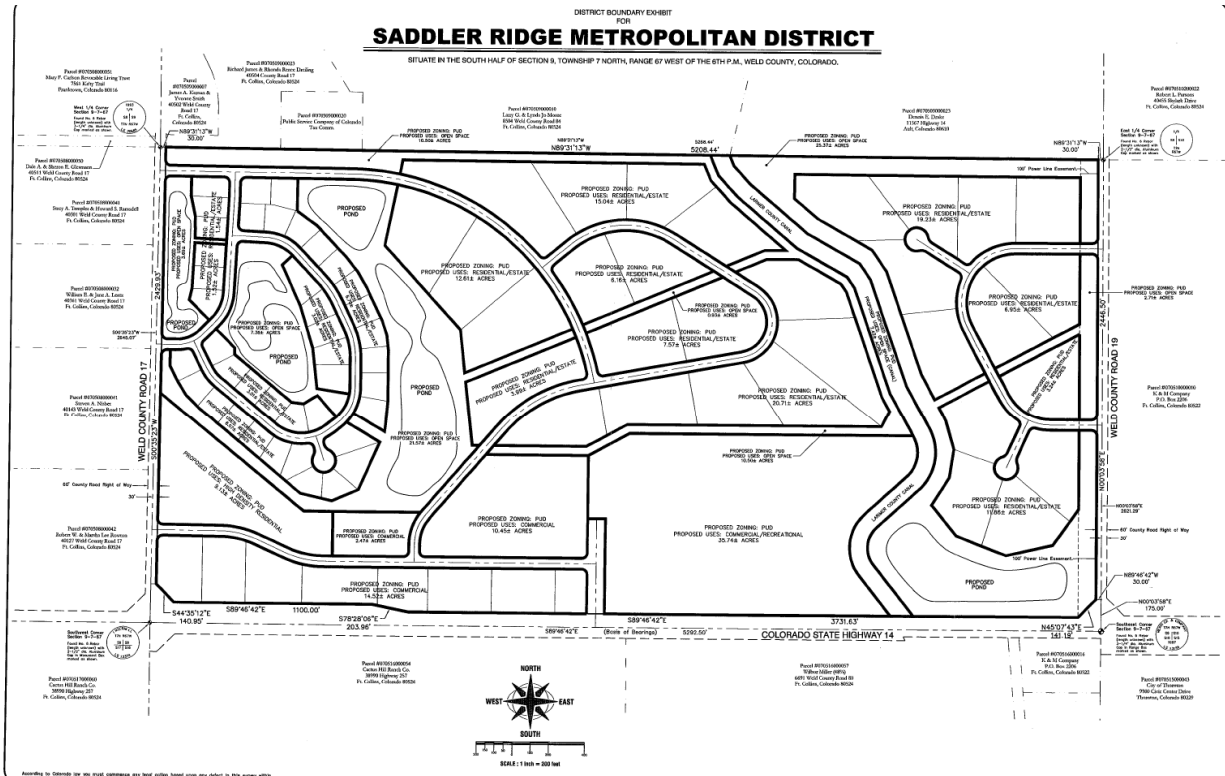
The District is authorized by Title 32 of the Colorado Revised Statutes to use a number of methods to raise revenues for capital needs and general operations costs. These methods, subject to the limitations imposed by Section 20 of Article X of the Colorado Constitution, include issuing debt, levying taxes, and imposing fees and charges. Information concerning directors, management, meetings, elections, and current taxes are provided annually in the Notice to Electors described in Section 32-1-809(1), Colorado Revised Statutes, which can be found at the District office, on the District's web site, on file at the Division of Local Government in the State Department of Local Affairs, or on file at the office of the Clerk and Recorder of each county in which the Special District is located.

Attached as Exhibit A is a map of the District's boundaries.

EXHIBIT A MAP

DISTRICT BOUNDARY EXHIBIT FOR SADDLER RIDGE METROPOLITAN DISTRICT

SITUATE IN THE SOUTH HALF OF SECTION 9, TOWNSHIP 7 NORTH, RANGE 67 WEST OF THE 6TH P.M., WELD COUNTY, COLORADO.



INTERMILL LAND SURVEYING, INC.
 1801 NORTH 116TH AVENUE, GREELEY, COLORADO 80637, TEL: (970) 869-4016 / FAX: (970) 862-6710

PROJECT NO.	SHEET NO.	NO. OF SHEETS	PROJECT NO.
DISTRICT BOUNDARY EXHIBIT	1	1	P-024-001
Part 5.1/2 of Sec. 9, T. 7N, R. 67W, Weld County, Colorado			